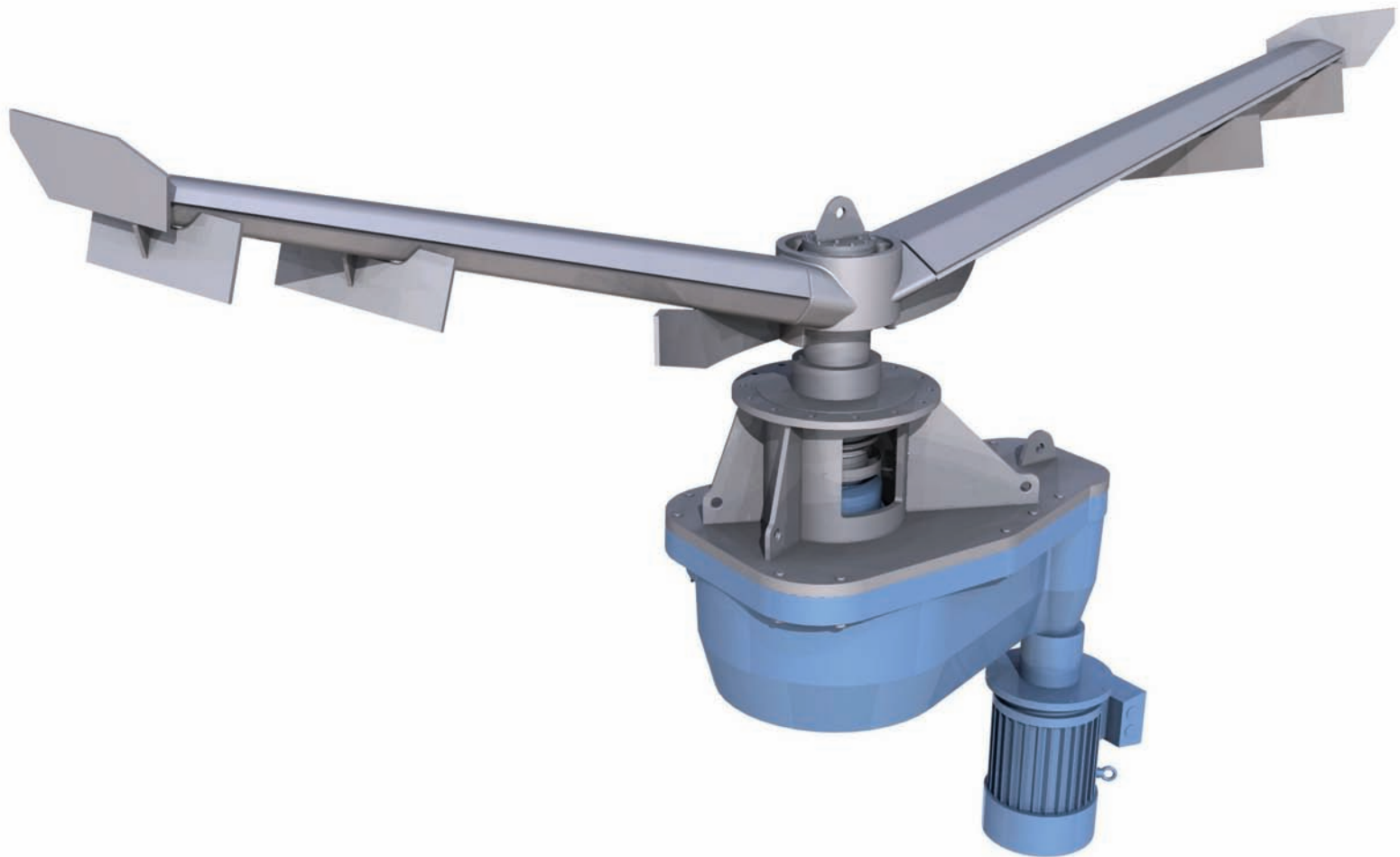


# Discharge Scraper ADS

Optimal tower discharge



# Discharge Scraper ADS

## Uniform discharge

The Discharge Scraper ADS operates in connection with a medium consistency tower bottom discharge pump.

The scraper works over the complete bottom area and directs the pulp to the suction opening of the discharge pump. The homogenized bottom area pulp consistency enables a uniform discharge and prevents channeling in the tower.

## Stabilized pumping

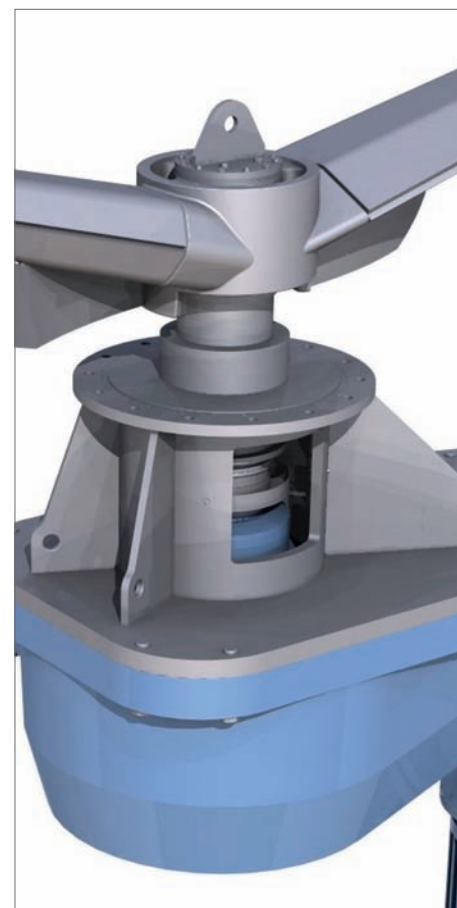
When combined with an MC pump, the Discharge Scraper ADS produces a stable feed flow to downstream processes such as brownstock washing, oxygen delignification, and the bleaching stages.

## Easy installation

Discharge Scraper ADS is easy to install into existing stock towers requiring only minimal changes. This results in less downtime.

## Sizes

Size	Tank diameter (mm)
ADS-3000	3,000-4,200
ADS-4300	4,300-5,400
ADS-5500	5,500-11,000
ADS-6500	6,500-13,000



## Benefits

- Uniform discharge
- Stabilized pumping
- Easy installation



**ANDRITZ Oy**  
Kotka, Finland  
Phone: +358 20 450 5555

**ANDRITZ K.K.**  
Tokio, Japan  
Phone: +81 3 3536 9700

**ANDRITZ AB**  
Karlstad, Sweden  
Phone: +46 54 771 4500

**ANDRITZ Inc.**  
Roswell (Atlanta), GA, USA  
Phone: +1 770 640 2500

**ANDRITZ BRASIL Ltda.**  
Curitiba, Brazil  
Phone: +55 41 2103 7611

**ANDRITZ TECHNOLOGIES Ltd.**  
Foshan, China  
Phone: +86 757 8296 9222

[www.andritz.com](http://www.andritz.com)  
[fiberline@andritz.com](mailto:fiberline@andritz.com)