

Screw Press Upgrade Products

Slotted Headbox

The Situation:

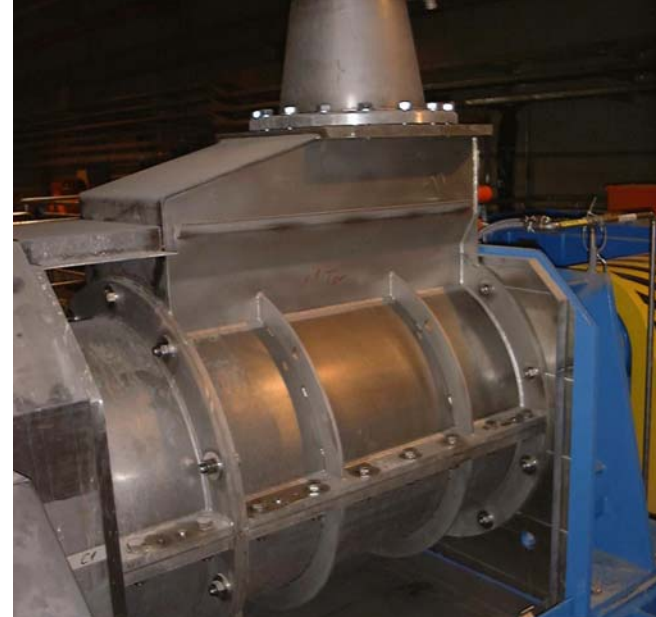
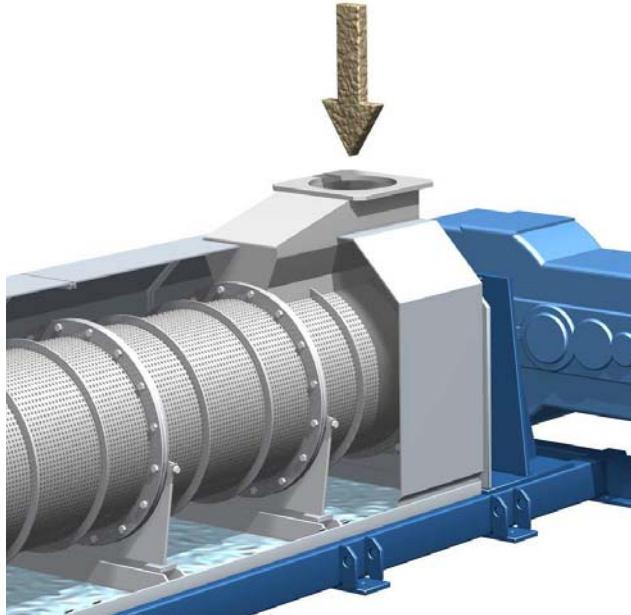
To low feed consistency effects a to high inlet pressure:

- To high inlet pressure leads to plugging of the dewatering holes by the fiber bundles
- Plugged screen basket holes can not dewater - the dewatering action is moved forward to the next sections until the press suffers completely from “pumping through” instead of dewatering
- Shut downs and uneven operation are the results

Screw Press Upgrade Products

Slotted Headbox

The Solution:



Upgrade to slotted headbox design:

- Increased dewatering area due to the slot design
- The slot headbox feeds the incoming pulp over a longer part of the screw shaft, this reduces the hydraulic load significantly
- Smooth and efficient screw press operation