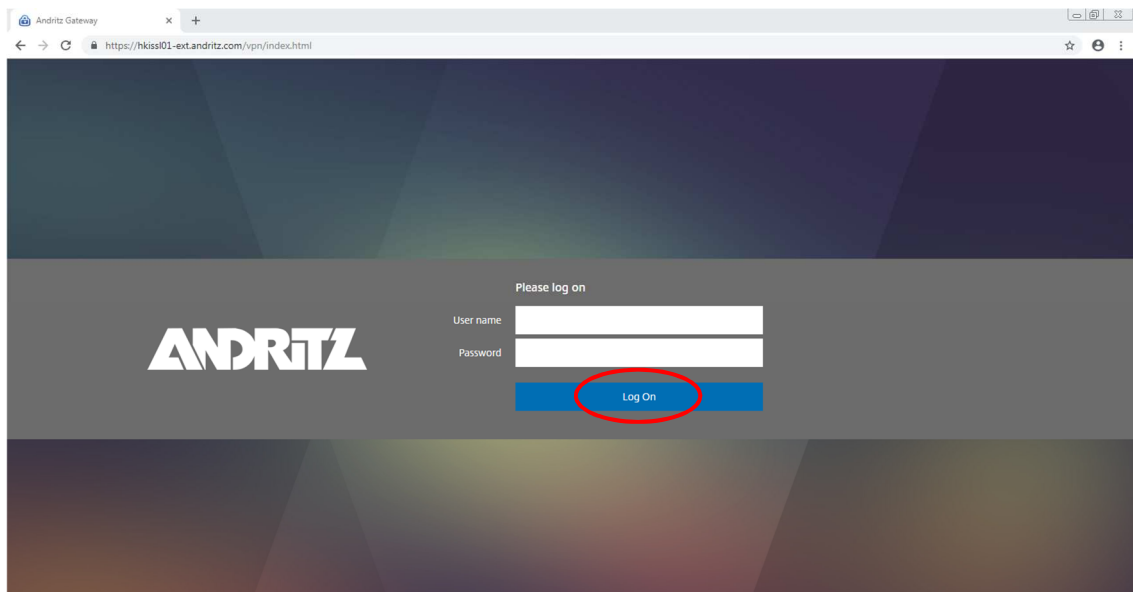


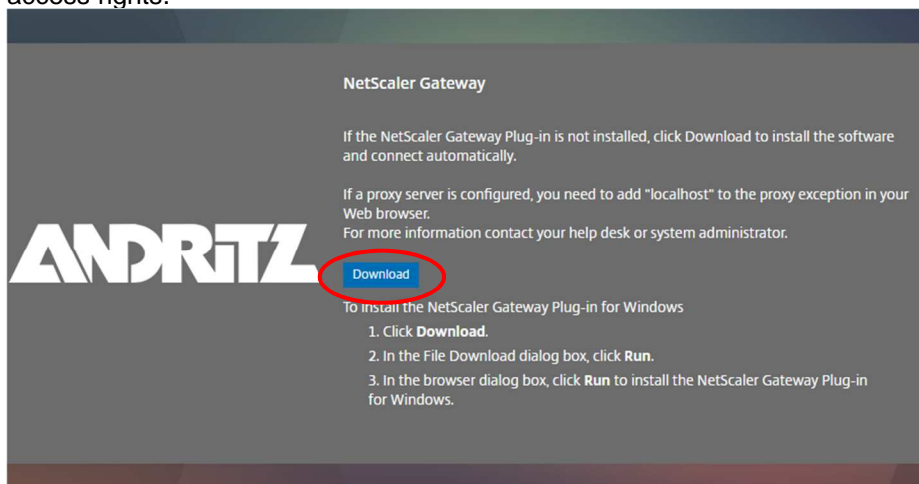


Quick guide for Andritz remote access

1. Open Internet browser(recommended Chrome & Firefox) and go to:
<https://hkissl01-ext.andritz.com>
Insert your personal Andritz account info and click "Log On".

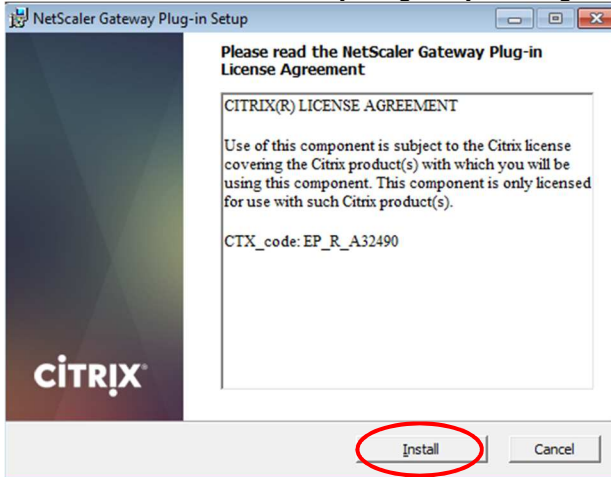


2. After succesfull log on choose "Download". Run the downloaded file and accept all Windows access rights.

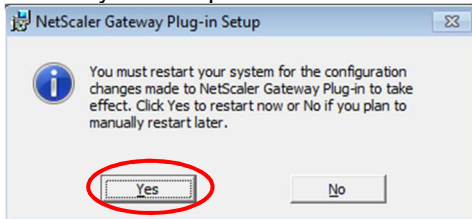




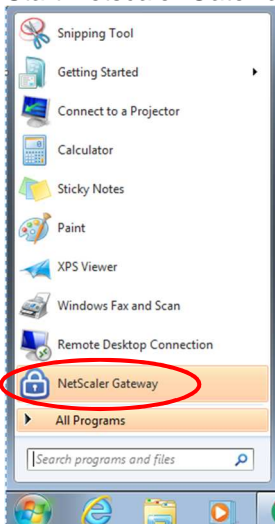
3. Install the Netscaler Gateway Plug-in by clicking "Install".



4. Restart your computer after the install completes.

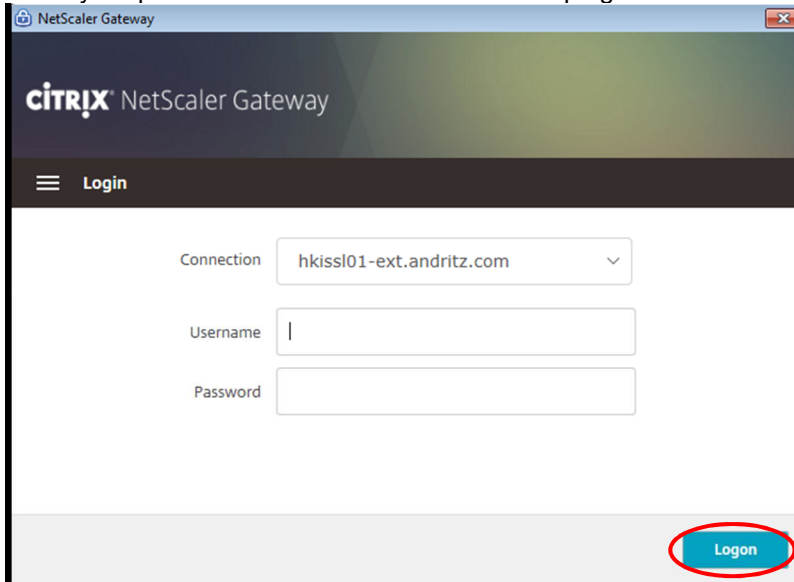


5. Start Netscaler Gateway Plug-in from the Start menu and/or from the shortcut on desktop.

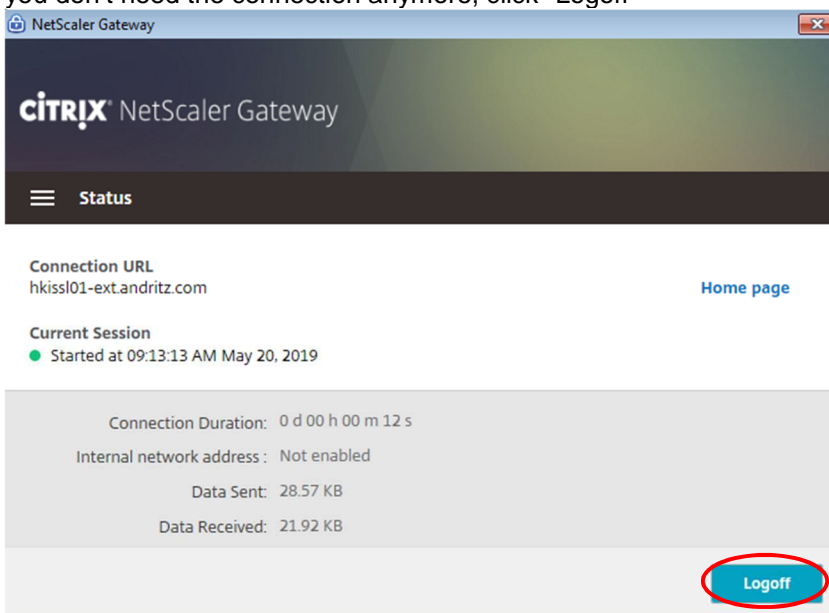






6. Insert your personal Andritz account info to the plug-in and click "Logon"



7. After succesfull logon, you are able to use the Andritz resource you have access rights. When you don't need the connection anymore, click "Logoff"



- In future, you can establish the remote access starting from section 5.
- From the Windows taskbar, you can find the Netscaler icon  when the connection is on and the icon turns gray  when the connection is off.