



PULP & PAPER

AIR IMPULSE CHIP SCREENING

**JetScreen CHIP
THICKNESS SCREEN**

ANDRITZ JetScreen chip thickness screen is a chip screening innovation that separates chips by their thickness as they pass through air jets. Sounds simple, because it is. The chip flow is distributed and discharged across the width of the

screen at the top of the screen. The chips slide down the screen past a strong air impulse. The accept fraction descends while oversize or overthick chips, pins, fines, and any contaminants in the chip flow are separated by two air impulses.

Pins and fines can be directed to a fines conveyor. Oversize and overthick chips are removed for further processing. The pins, fines, and dust not suitable for pulping can be mixed with bark and other biomass for combustion in a power boiler.

ANDRITZ

ENGINEERED SUCCESS

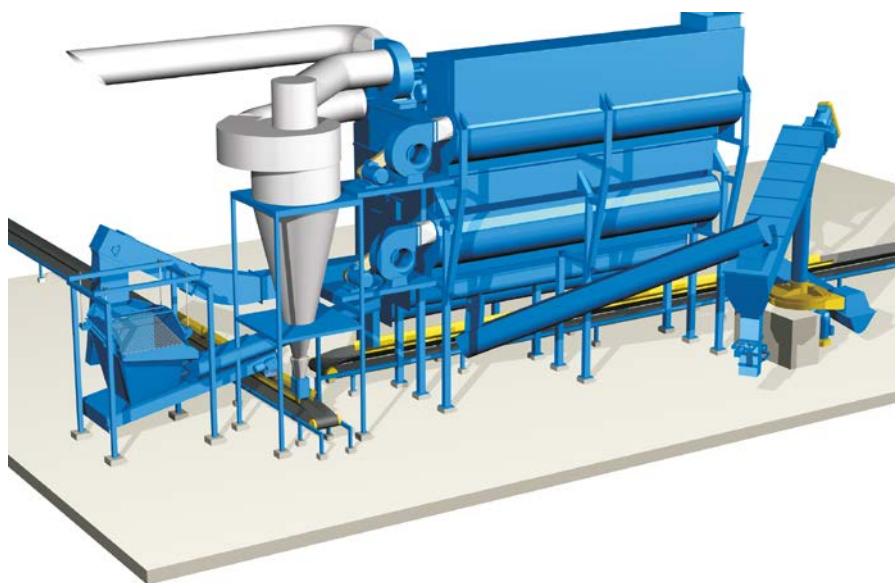
Superior flexibility and capacity for chip screening

The ANDRITZ JetScreen chip thickness screen eliminates the performance variances created by disk and roll wear in conventional screens, as well as the maintenance costs to replace rolls, disks, and shafts. JetScreen is fully adjustable. The separation efficiency of the different fractions can be easily adjusted during operation. This gives operators an excellent tool for maintaining high quality chips even with varying wood quality, different wood species, weather conditions, or other factors that could affect pulp quality.

BENEFITS

- Improves yield
- Completely closed, dust-free unit
- Screening efficiency adjustable (online) during operation
- Eliminates expensive roll and disc replacements
- Few moving parts result in low maintenance requirements

| Type | Model | Capacity (m³ l/h) | Length (m) | | |
|-------------|-----------|-------------------|------------|-----------|-----------|
| | | | Total | 1st stage | 2nd stage |
| Single deck | SCI 10-10 | 750 | 10 | 6 | 4 |
| | SCI 10-12 | 900 | 12 | 7.2 | 4.8 |
| | SCI 10-14 | 1,050 | 14 | 8.4 | 5.6 |
| | SCI 10-16 | 1,200 | 16 | 9.6 | 6.4 |
| Double deck | SCI 20-10 | 1,250 | 10 | 10 | 10 |
| | SCI 20-12 | 1,500 | 12 | 12 | 12 |
| | SCI 20-14 | 1,750 | 14 | 14 | 14 |
| | SCI 20-16 | 2,000 | 16 | 16 | 16 |



3D view of the JetScreen chip thickness screen with pins screen attached

EUROPE

ANDRITZ Oy
Lahti, Finland
p: +358 20 450 5555

NORTH AMERICA

ANDRITZ Inc.
Alpharetta, GA, USA
p: +1 770 640 2500

SOUTH AMERICA

ANDRITZ Brasil Ltda.
Curitiba, Brazil
p: +55 41 2103 7611

ASIA

ANDRITZ (China) Ltd.
Foshan, China
p: +86 757 8296 9222

woodprocessing@andritz.com

ANDRITZ.COM

ANDRITZ

All data, information, statements, photographs and graphic illustrations in this leaflet are without any obligation and raise no liabilities to or form part of any sales contracts of ANDRITZ AG or any affiliates for equipment and/or systems referred to herein. © ANDRITZ AG 2019. All rights reserved. No part of this copyrighted work may be reproduced, modified or distributed in any form or by any means, or stored in any database or retrieval system, without the prior written permission of ANDRITZ AG or its affiliates. Any such unauthorized use for any purpose is a violation of the relevant copyright laws. ANDRITZ AG, Stattegger Strasse 18, 8045 Graz, Austria. JetScreen 1.1/09.2019 EN/A4

