

The image shows a close-up of a machine panel with the Andritz logo in blue and white. The panel is part of a larger industrial machine, and the background is a blurred view of the machine's interior and other components.

NONWOVEN

PA.3000 ELLIPTICAL CYLINDER PRE-NEEDLER

**HIGHER NEEDLING CAPACITY
AND WIDER LINE APPLICATIONS**

**BEST PRODUCTIVITY
FOR LOW WEIGHTS**

The new elliptical cylinder pre-needler PA.3000 is the ideal solution for processing fiber matts with new capabilities to freeze the fabric evenness, as it operates with no internal draft and with more than 70% extra surface impact needling

capacity than the already existing technology. It perfectly matches the markets requiring high visual aspect products and productivity. The PA.3000 is equipped with a strong carbon fiber moveable beam to accept the higher stroke speed and width with minimum flexion tolerance. The loose fiber matt is

compressed and fed into the needling zone without draft followed by the draft free pre-needling process. As a result the web layers are stitched together with optimum cohesion to preserve the web surface evenness, minimizing the risk of creating clouds as when using other pre-needler designs.

The Andritz logo, consisting of the word 'ANDRITZ' in a bold, blue, sans-serif font.

ENGINEERED SUCCESS

More needles for processing an even surface aspect

IMPROVED NEEDLING DENSITY

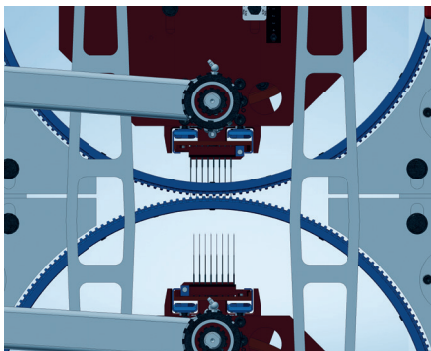
The design of the elliptical PA.3000 allows to have more needles per linear meter (1,280 n/m per board) by reducing the distance between needles. Needle impacts on the fabric surface are then increased by more than 70%. Thanks to the new design and distribution of holes on the cylinders, it increases the number to eight rows of needles over the board width.

MAIN SPECIFICATIONS

- Working width: from 3.00 m up to 6.75 m
- Advance speed: up to 18 m/min or 40 m/min (stroke unclutched)
- Upper needle beam (optional)
- Needle pattern: 1,280 needles per meter (per needle board)

BENEFITS

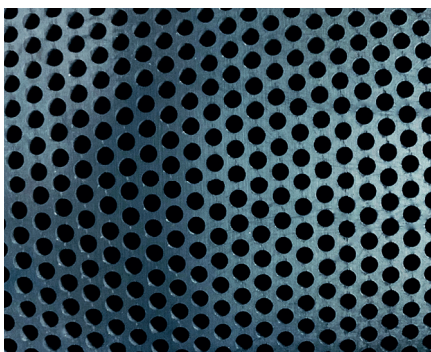
- Increased and improved needling density
- Working width up to 6.75 m
- Highest production speed
- Improved fabric visual aspect
- Operator-friendly (easy to operate)
- Low maintenance requirement



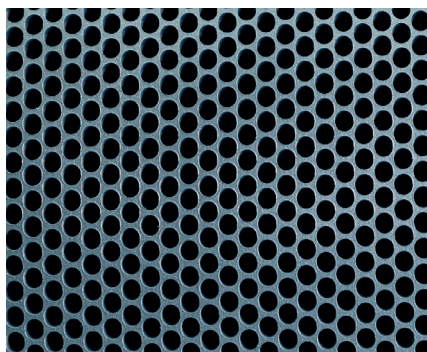
Kinematics of the needleloom



Easy access for operators and pneumatic clamping system



PA.2000: Cylinder pattern



PA.3000: Enhanced cylinder pattern

FRANCE

ANDRITZ Asselin-Thibeau SAS
Elbeuf, France
p: +33 2 32 96 42 42
asselin-thibeau@andritz.com

USA

ANDRITZ Inc.
Spartanburg, USA
p: +1 864 587 4848
nonwoven-americas@andritz.com

CHINA

ANDRITZ (China) Ltd.
Wuxi, P.R. China
Phone: +86 510 8536 1269
nonwoven-china@andritz.com

ANDRITZ

All data, information, statements, photographs and graphic illustrations in this leaflet are without any obligation and raise no liabilities to or form part of any sales contracts of ANDRITZ AG or any affiliates for equipment and/or systems referred to herein. © ANDRITZ AG 2020. All rights reserved. No part of this copyrighted work may be reproduced, modified or distributed in any form or by any means, or stored in any database or retrieval system, without the prior written permission of ANDRITZ AG or its affiliates. Any such unauthorized use for any purpose is a violation of the relevant copyright laws. ANDRITZ AG, Stattegger Strasse 18, 8045 Graz, Austria. Flyer PA.3000 elliptical cylinder pre-needler / 11.2020 EN

