



FEED & BIOFUEL PELLET MILL TYPE ACM125

EFFICIENT 125 HP PELLET MILL WITH ENHANCED SAFETY AND DURABILITY

Designed as a direct replacement for 125 HP pellet mills, this model offers a quieter gearbox and optimal functionality. Industry-leading bearings and seals ensure top quality, while the stainless steel pellet chamber and gearbox liner resist corrosion and contain dust effectively.

Safety is prioritized with a trapped key interlock for the mill door, and side cover access simplifies maintenance, reducing downtime and costs. Various high-quality die and roll shell designs are available, all in a compact, cost-efficient design.

- High efficiency and performance
- Low maintenance costs
- Enhanced safety features
- Versatile design for multiple applications

ANDRITZ

STANDARD FEATURES

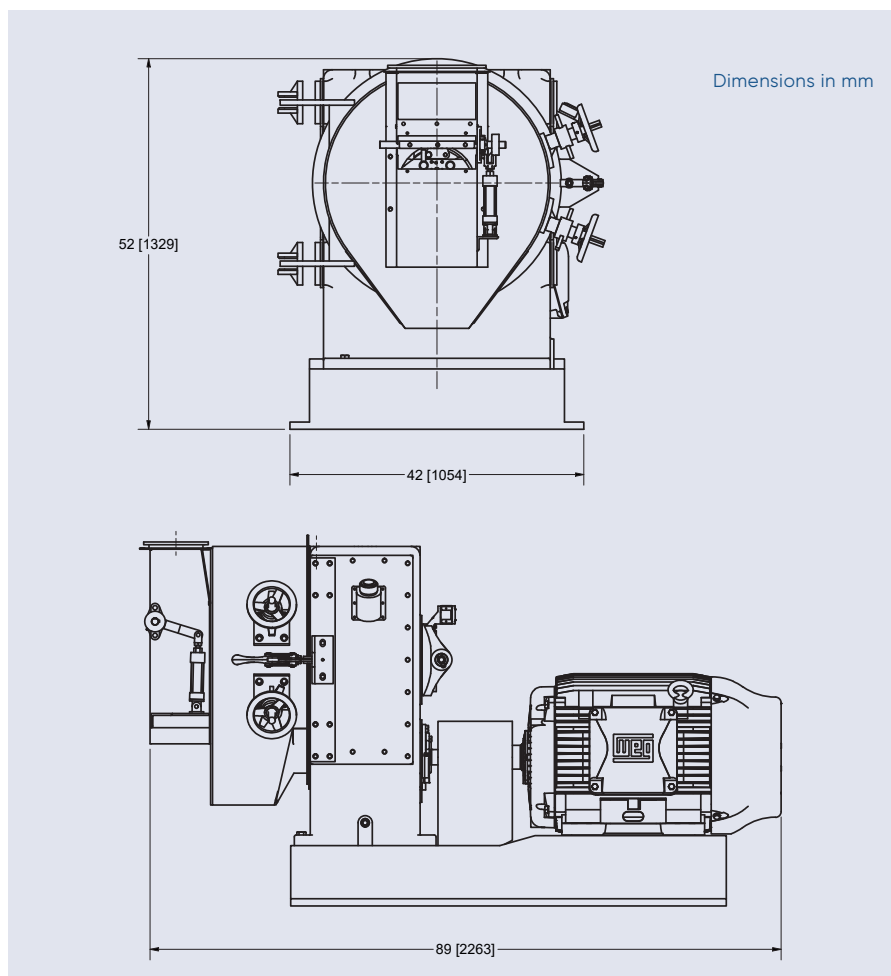
- Direct replacement for existing 125 HP pellet mills.
- Enhanced gearbox for optimal function and quieter operation.
- Bearings and seals are used from industry leading manufacturers ensuring best quality.
- Stainless steel pellet chamber with stainless gearbox liner ensures high corrosion resistance and dust containment.
- Trapped key interlock for Pellet mill door and safety.

ADDITIONAL FEATURES AND BENEFITS

- Side cover access for ease of maintenance and reduced downtime which saves cost and time.
- Variety of high-quality die and roll shell designs to suit the application.
- Compact and cost-efficient design.

OPTIONS

- Hoist with tools to assist with die and roll assembly changes.
- Variety of motor options to choose from for different needs.
- Standard 32" OD pellet chamber or 38" OD pellet chamber for oversized pellet die with Hinge side option (LH or RH).
- Manual or Air operated (which can be tied to control system) Quick dump feed chute.
- Force feeder option available.
- Conditioner with optional liquid addition ports. (Varying size and length to fit existing installment – custom options available)
- Feeder with magnetic discharge. (Varying size and length to fit existing installment – custom options available)



TECHNICAL DATA

PELLET MILL TYPE ACM125

Model	ACM125
HP Range	75-125
Die ID	16 [406 mm]
Track Width	4.5 [115.5 mm]
Die RPM (Motor RPM – 1800/1500)	314/261
Force feeder option	Yes

ANDRITZ Feed and Biofuel A/S
andritz-fb.dk@andritz.com
 p: +45 72 160 300 / andritz.com/ft

ANDRITZ Feed and Biofuel USA
USA.andritz-fb.us@andritz.com
 p: +1 570 546 1253



All data, information, statements, photographs and graphic illustrations in this leaflet are without any obligation and raise no liabilities to or form part of any sales contracts of ANDRITZ AG or any affiliates for equipment and/or systems referred to herein. © ANDRITZ GROUP 2024. All rights reserved. No part of this copyrighted work may be reproduced, modified or distributed in any form or by any means, or stored in any database or retrieval system, without the prior written permission of ANDRITZ AG or its affiliates. Any such unauthorized use for any purpose is a violation of the relevant copyright laws. ANDRITZ AG, Stattegger Strasse 18, 8045 Graz, Austria.

