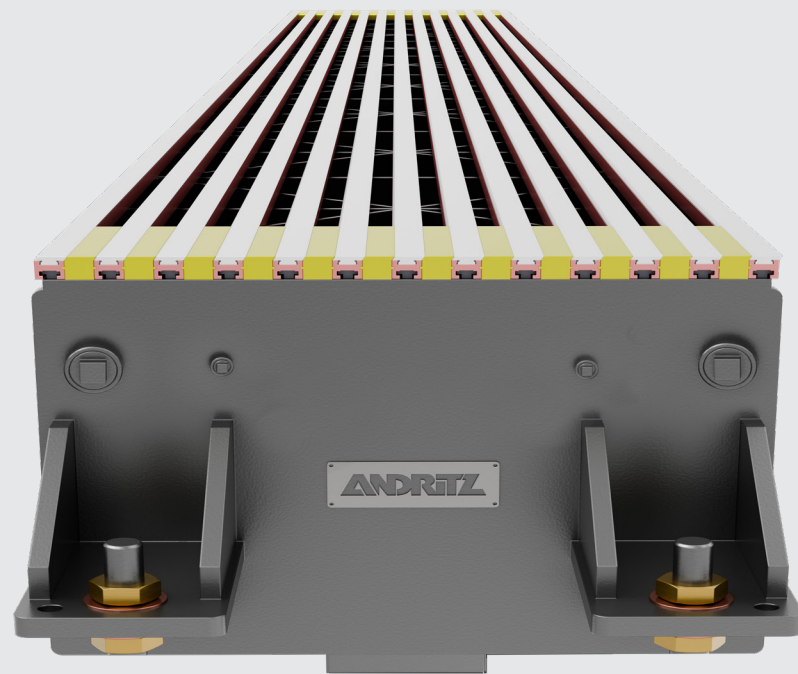




LOVAC UNITS

IMPROVED DEWATERING EFFICIENCY

ANDRITZ



DuoFlo unit

DUOFLO® UNIT

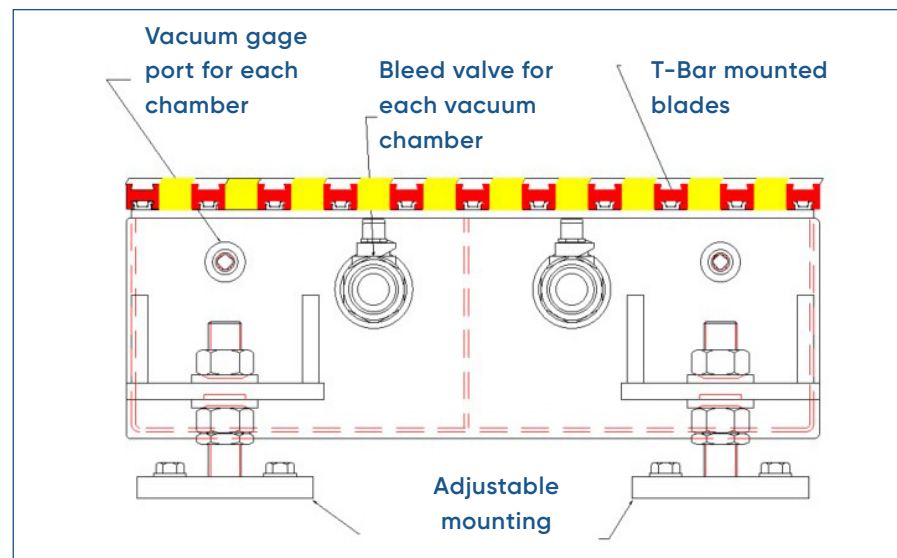
The DuoFlo is a sealed drainage unit commonly used at the end of the lovac section to dry the sheet to wet-line or dry-line consistency depending on the grade.

COVER

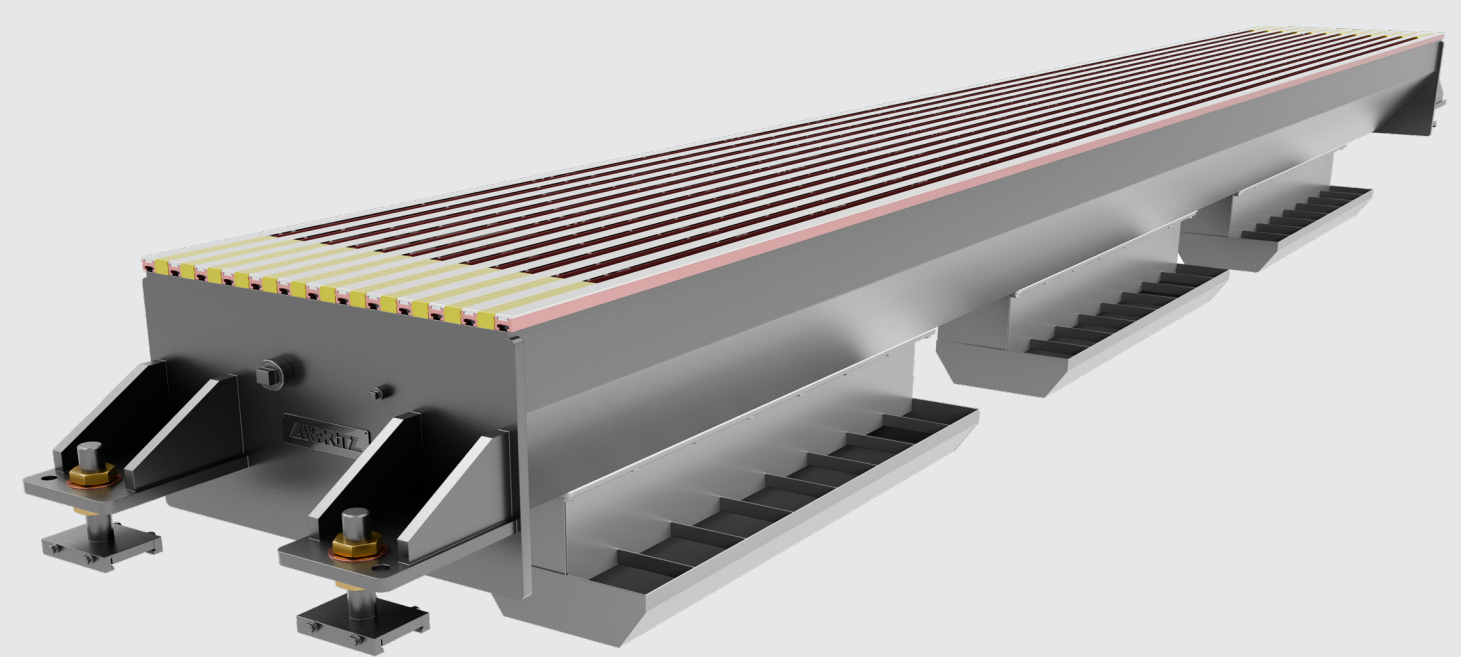
- Available in standard (5, 7, 9, 11, 13) blade configurations, or any special combination
- Choose from PrimePoly or PrimeCeramic materials
- Individually adjustable PrimePoly deckles

FEATURES

- Two separate LoVac chambers in one unit for (2) Δp settings
- End discharge for high Δp capability
- Patented T-bars are mounted on full length, precision-machined bearer bars for even, "streak free" dewatering
- Vertically adjustable mounts included
- Custom designed for all machine widths and speeds
- All 316L stainless steel construction
- 2" (50.8 mm) bleed valve included on tend side
- 1/2" (12.07 mm) - NPT gage/manometer connection on each end



DuoFlo unit with end discharge



OrthoFlo unit

ORTHO FLO®

The OrthoFlo is a sealed drainage unit designed to handle large flow rates using low Δp . It is customarily used after sheet forming is complete.

COVER

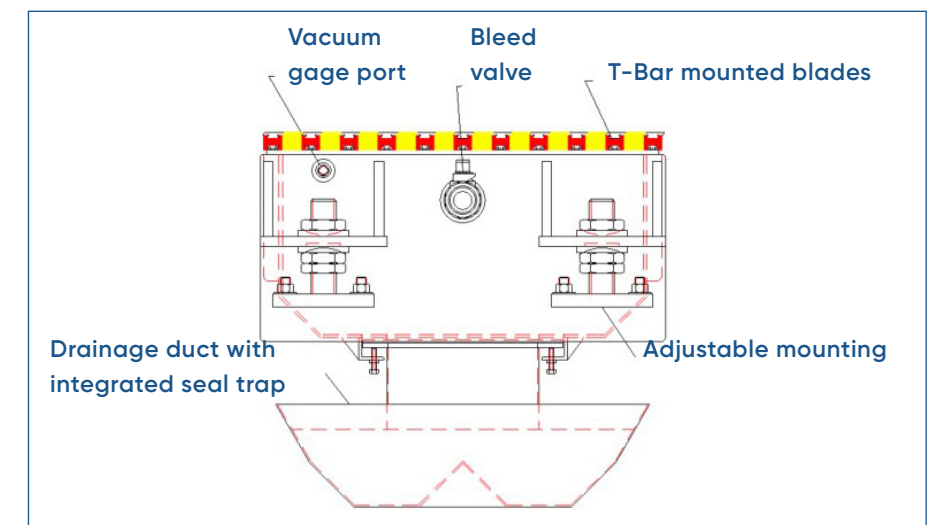
- Available in standard (5, 7, 9, 11, 13) blade configurations, or any special combination
- Choose from many blade material compositions
- Individually adjustable UHMW polyethylene deckles
- Blades have 0° surface for maximum control of drainage energy, and maximum retention of fiber

ACCESSORIES

- AutoVac 2 for accurate control of Δp
- ANDRITZ manometer graphically displays Δp schedule
- Air/water separator for bottom discharge units
- Blower systems with vacuum piping
- Permanent microwave/gamma gage mounting on unit

FEATURES

- Available in high-flow capacity integral-trap bottom discharge, or high-vacuum capacity end discharge designs
- ANDRITZ patented T-bars are mounted on full length, precision-machined bearer bars for even, "streak free" dewatering
- Adjustable stationary or shake mounts
- Custom designed for all machine widths and speeds
- All 316L stainless steel construction
- Vacuum/bleed connection on each end
- 2" (50.8 mm) bleed valve included
- 1/2" (12.07 mm) - NPT gage/manometer connection on each end



OrthoFlo unit with end discharge

IsoFlo* unit

IsoFlo is a patented design featuring blades at different heights, mounted on a specially designed LoVac unit. The vacuum level in the unit is adjusted to pull the fabric down over the lower blades, causing a vertical motion of the fabric and stock, to generate activity. There are several hundreds successful IsoFlo installations worldwide. The majority of North America's conventional line board machines and almost all bleached board machines in North America are equipped with Isoflo units.

ISOFLO DESCRIPTION

- Variable control of activity level at each table location with a simple adjustment of Δp
- IsoFlo can drain large volumes of water, which allows lower headbox consistency
- Proven track record on many recycle grades and difficult-to-drain furnishes
- Low Δp dewatering dramatically improves first pass retention
- Custom-designed systems provide flexibility for applications with a wide range of grades

COVER

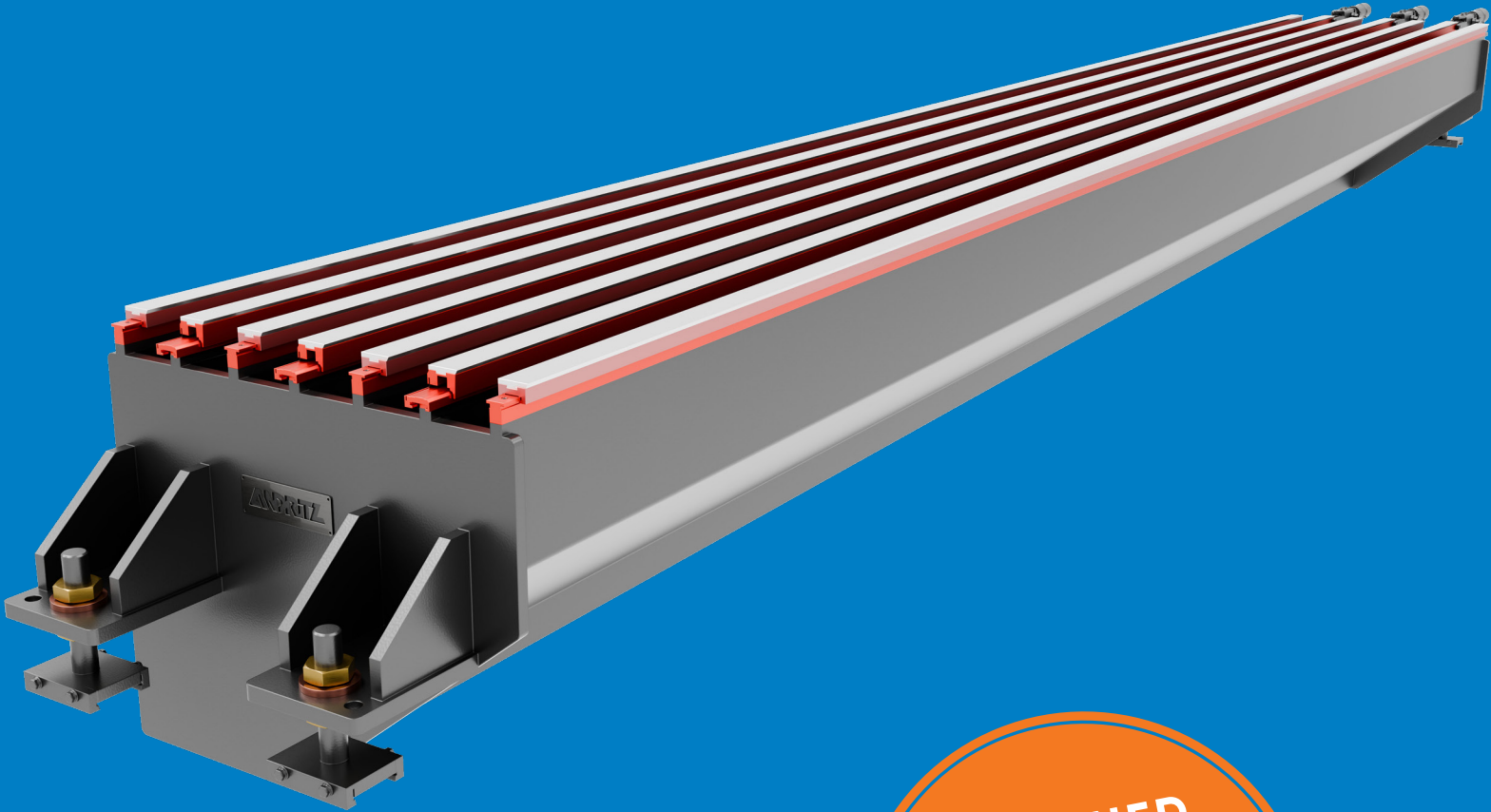
- Support blades are supplied with premium aluminum oxide top surface and fiberglass base
- Control (lower) blades are supplied in either ultra high molecular weight polyethylene, or premium aluminum oxide top surface with FRP base

FEATURES

- 316L stainless steel construction
- ANDRITZ patented T-bars mounted on precision machined full-length bearers bars for even dewatering
- Large bottom discharge ducts with integral seal
- Designed for high flow rates
- Adjustable stationary or shake mounts
- Custom-designed for all machine widths and speeds
- Vacuum/bleed connection on each end
- 2" (5.8 cm) bleed valve included
- 1/2" (12.07 mm) - NPT gage/manometer connection on each end

ACCESSORIES

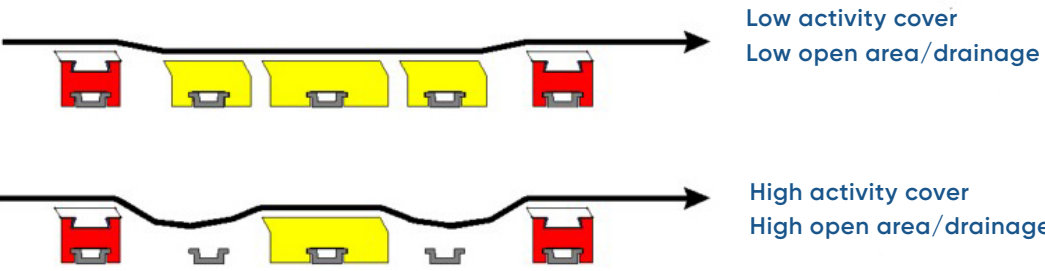
- AutoVac 2 automatic controller to accurately maintain Δp
- ANDRITZ manometer to graphically monitor Δp
- Air/water separator
- Blower system with vacuum piping



DESIGNED
FOR HIGH
FLOW RATES

—
ISO-FLO-V

ISOFLO COVER OPTIONS



AutoVac* HD unit

The AutoVac HD is a three-way electrically actuated valve for precise vacuum unit control vacuum by modulating applied vacuum or bleed air. The AutoVac HD is available in LoVac and HiVac series.

Applications include all LoVac and HiVac units on every grade of paper where vacuum accuracy and rapid response are critical.

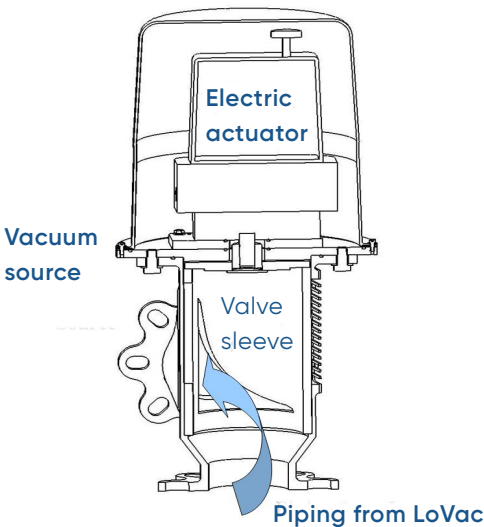
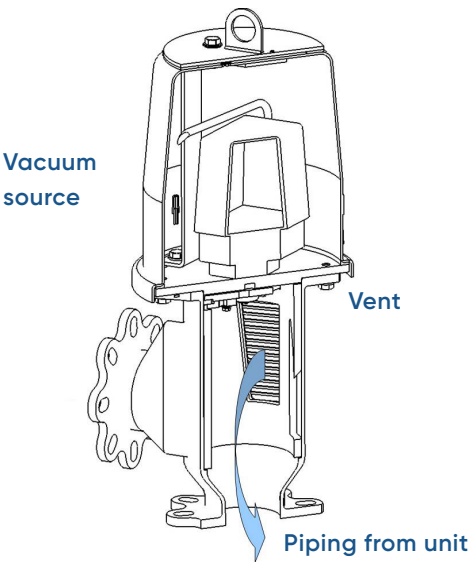
FEATURES

- High torque, electronically driven robust design for reliable, accurate operation
- Few internal parts and construction for easy maintenance
- Open, unrestricted flow paths for cleanliness

OPERATING FEATURES

- 24 VDC power/4 to 20 mA signal interface with Distributed Control System (DCS)
- Automatic operation with DCS and vacuum sensor
- Few parts for easy maintenance, quick disassembly
- Open, unrestricted flow paths to resist fiber build-up
- High torque rotary actuator with integrated encoder rated for unrestricted modulation
- Locks in place with loss of signal or power
- Manual override
- Linear response

Model	Operating range
AutoVac HD-L	0-60" (0-1524 mm) H ₂ O
AutoVac HD-H, 4"	0-25" (0-635 mm) Hg
AutoVac HD-H, 8"	0-25" (0-635 mm) Hg



CONSTRUCTION FEATURES

- All components made from non-corrosive materials
- Cast 316 stainless steel (CF8M) valve body
- 3 16L stainless steel machined parts
- Roto-molded polyethylene cover
- EPDM o-rings/gaskets
- 316 stainless steel fasteners
- US/International compatible pipe flanges
- 4", 150# ANSI (qty 8, 5/8" bolts)
- DN 100 PN 10/16 (qty 8, M16 bolts)
- DN 100 PN 6 (qty 4, M16 bolts)
- 33 foot (10 meter) shielded watertight PVC cable with stainless steel electrical connector for power/signal DCS interface

AUTOVAC HD CONTROL PANEL

- Used where the valve cannot be connected to an existing mill DCS
- Uses a single PLC with a 4" (100 mm) display panel to indicate vacuum levels for each AutoVac HD
- Set point and PID scaling is preset but can be adjusted to suit specific mill conditions
- Control panel provides a 24 VDC power output to drive the AutoVac HD actuators
- Available in 4 and 8 Station





EUROPE

ANDRITZ AG
Graz, Austria
p: +43 316 6902 0

NORTH AMERICA

ANDRITZ Inc.
Springfield, MA. USA
p: +1 413 750 4600

papermachine-service@andritz.com

[ANDRITZ.COM/PRIMESERVICE](https://www.andritz.com/PRIMESERVICE)

ANDRITZ

*Trademark of the ANDRITZ GROUP. For information regarding ownership and countries of registration, please visit www.andritz.com/gr-trademarks. All data, information, statements, photographs and graphic illustrations in this leaflet are without any obligation and raise no liabilities to or form part of any sales contracts of ANDRITZ AG or any affiliates for equipment and/or systems referred to herein. © ANDRITZ AG 2024. All rights reserved. No part of this copyrighted work may be reproduced, modified or distributed in any form or by any means, or stored in any database or retrieval system, without the prior written permission of ANDRITZ AG or its affiliates. Any such unauthorized use for any purpose is a violation of the relevant copyright laws. ANDRITZ AG, Stattegger Strasse 18, 8045 Graz, Austria. LowVac brochure 1.1/08.2025 EN