



# RELIABLE WET AND DRY OPERATION WITHOUT CLOGGING

**ANDRITZ Sewage Wet,  
ASW series**



**ANDRITZ**

# ANDRITZ Pumps for your industry



Water



Pulp and  
paper



Power



General  
industries

ANDRITZ specializes in the development and manufacturing of high-quality pumps, offering a comprehensive range from standardized products to tailor-made solutions across various industries. Our pumps have achieved global success in diverse applications, including municipal drinking water supply, wastewater disposal, industrial water distribution, and significant infrastructure projects such as irrigation, seawater desalination, and water transmission.

In flood control, irrigation, and water transport, ANDRITZ not only provides the largest and most powerful pumps, but also complete systems and pumping stations. As a prominent supplier to the pulp and paper industry, we leverage strong process expertise to deliver pump solutions that enhance process stability and energy efficiency. Our product portfolio encompasses a full range of robust process pumps and innovative medium-consistency pumps with an advanced system to avoid fiber losses. Notably, our double-suction headbox pumps boast efficiency levels of up to 93% and low-pulsation impellers, crafted with innovative methods. They thus provide the best performance in the paper manufacturing process.

In line with our commitment to sustainability, ANDRITZ offers reliable small hydroelectric power plants and pumps utilized as turbines for private, municipal, industrial, and commercial applications. Our diverse range ensures economically and ecologically sustainable energy production. Specializing in hydroelectric storage, our pumps cover a wide range from high heads to high flows, showcasing our engineering competence.

Our pump series, distinguished by modern and robust designs, high efficiency levels, and sustainability features, find applications in various demanding industries, including sugar and starch, lysine, bioethanol, hydrogen, fertilizer, mining, offshore, and general process industries.

Additionally, ANDRITZ provides IIOT-enabled premium pump technology for enhanced process monitoring, thus reflecting our commitment to cutting-edge solutions.

## Premium pumping technology

For 170 years, ANDRITZ has been synonymous with design ability and innovation. Our products are sturdy and wear-resistant and can meet high customer Standards in terms of efficiency, service life, easy maintenance, and economic benefits. They have been successfully operated in multiple industries around the world. ANDRITZ's high standards are based on decades of experience in hydraulic machinery design and extensive professional knowledge. Our goal is to provide high-quality products and services to ensure sustained customer satisfaction.

### ANDRITZ SEWAGE WET PUMP, ASW SERIES

ANDRITZ ASW series pumps are wastewater pumps equipped with submersible motors, specifically designed for the wastewater industry. A crucial element of these pumps is the impeller. Non-clogging (N), semi-open (S), closed (C) or vortex (V) impellers are available, each essential to maximizing pump performance. Optimized hydraulic designs further enhance pump efficiency and contribute to significant energy savings. These pumps utilize a high-efficiency IP68 submersible motor, compliant with IEC 60034-30 IE3 standards. Furthermore, the optional closed cooling jacket ensures effective motor cooling even if the motor is not continuously or totally submerged, thus maintaining optimal operating temperature and reliability.

Optional stainless steel materials are available for handling corrosive and abrasive media, and significantly improve the pump's durability and service life. Customers can select the most suitable impeller, material, and cooling configuration based on their specific application requirements. Additionally, the modular design helps reduce the number of parts and simplifies maintenance.

### FIELDS OF APPLICATION

- Wastewater management
- Industrial water systems
- Wastewater transport
- Wastewater disposal
- Wastewater treatment plants
- Sludge disposal
- Sludge processing
- Municipal wastewater

### PRODUCT BENEFITS

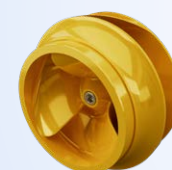
- Non-clogging hydraulics
- Maintenance carriage
- Best-in-class handling of wet wipes
- Modular design
- Reliable and stable
- High efficiency and energy saving
- Multiple monitoring and protection possibilities

### PRODUCT FACTS

- Discharge diameter (DN) 80 to 800 mm
- Flow rates up to 9,000 m<sup>3</sup>/h
- Heads up to 90 m
- Efficiency up to 85%
- Pressure class up to PN16
- IP68 submersible motors

\*These values are guidelines and may differ depending on project requirements.

CLOSED  
(C)



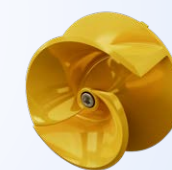
NON-CLOGGING  
(N)



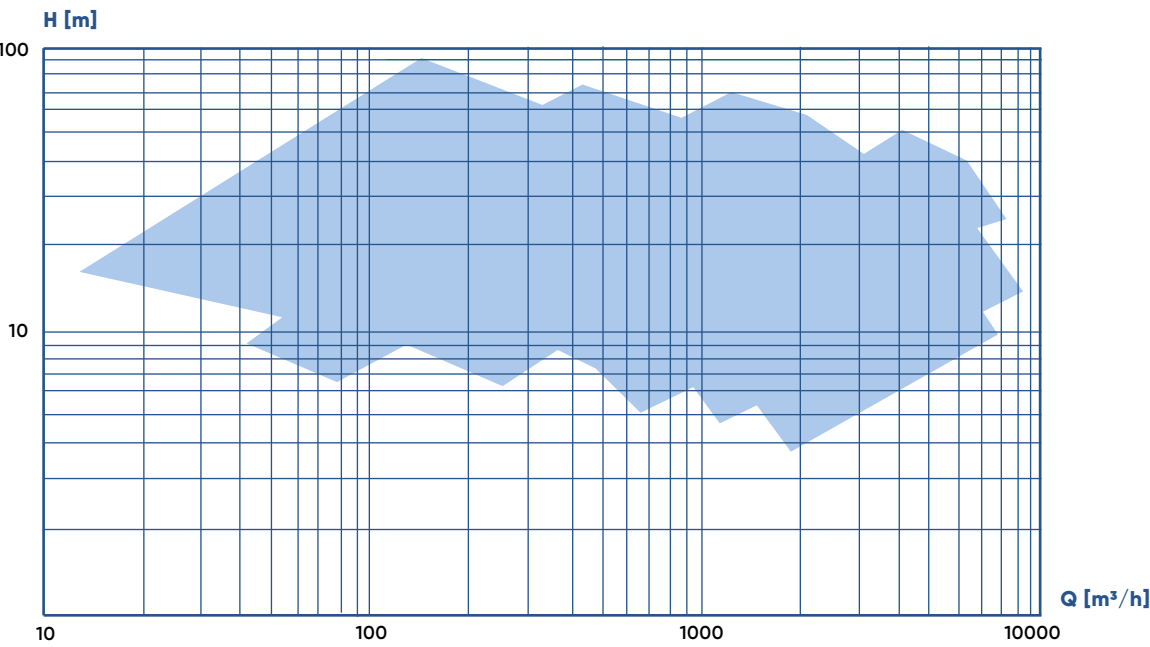
VORTEX  
(V)



SEMI-OPEN  
(S)



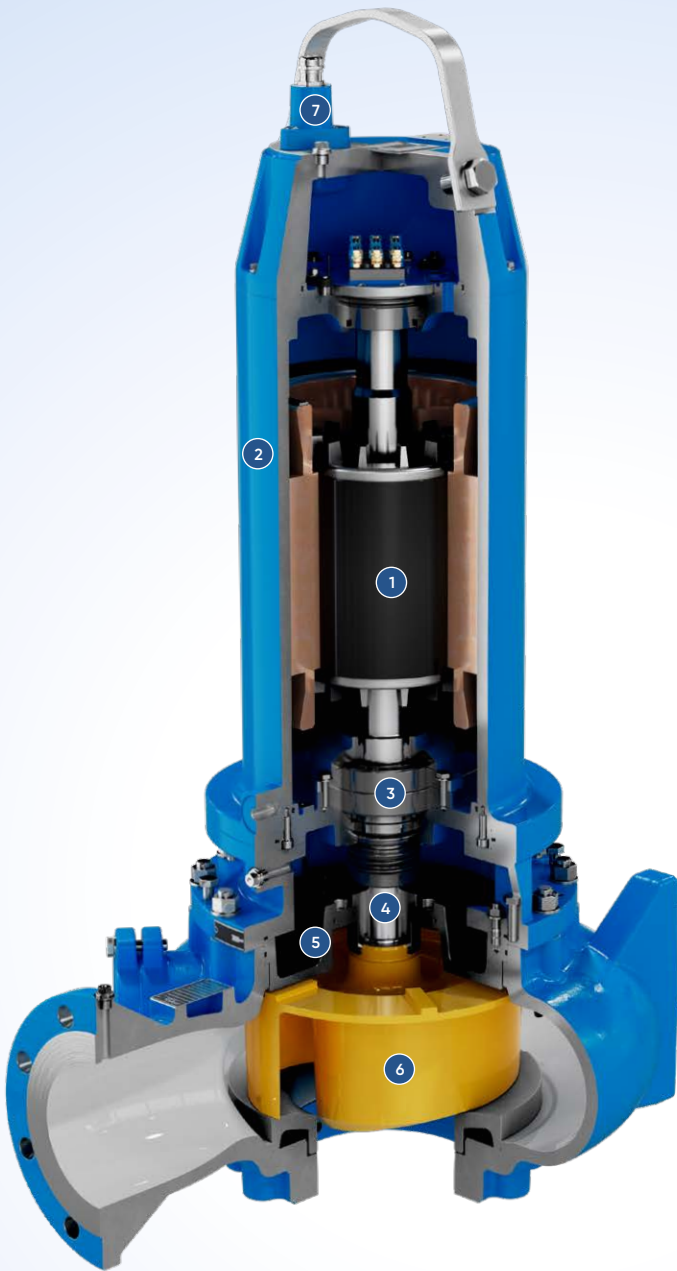
# ANDRITZ sewage wet, ASW series



## MATERIAL COMBINATIONS

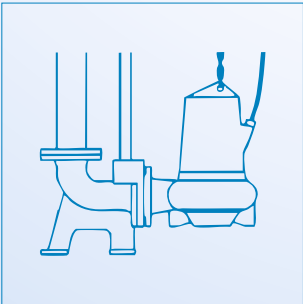
ASW SERIES	EN-GJL-250	EN-GJS-400-15	1.4474	1.4404	1.4462	1.4021	1.4517 M
Volute casing	■		■				
Impeller			■				■
Wear ring				■			
Front liner			■				■
Casing cover	■		■				
Oil chamber		■	■				
Shaft					■	■	
Motor housing	■		■				
Discharge bend	■		■				

European standard		US standard	
Number	Name	Grade	UNS
5.1301	EN-GJL 250	/	Class 40B
5.3105	EN-GJS-400-18	/	Class 60-40-18
1.4474	GX4GrNiMoN26-5-2	1A	J93370
1.4404	X2CrNiMo17-12-2	316L	S13603
1.4021	X20Cr13	420	S42000
1.4517 M	GX2CrNiMoCuN26-6-3-3	ASTM A890 Grade 1B	J93372
1.4462	X2CrNiMoN22-5-3	ASTM A789 Grade S32205	S32205

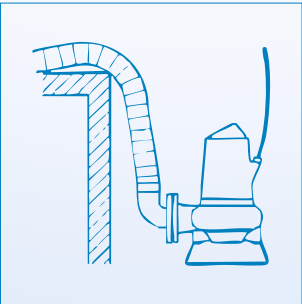


- 1 IP68 SUBMERSIBLE MOTOR**
  - Premium efficiency motors meet IE3 efficiency requirements
  - Multiple monitoring: warning when overheating or leakage occurs
- 2 COOLING JACKET (option)**
  - Closed cooling system
- 3 BEARING**
  - Maintenance-free & self-lubricating bearing
- 4 MECHANICAL SEAL**
  - Two single mechanical seals in tandem arrangement
- 5 CASING COVER**
  - Optimized cooling channel design ensures high heat exchange efficiency
- 6 IMPELLER**
  - Different impellers for different applications
- 7 CABLE ENTRANCE**
  - Special design ensures reliable seal

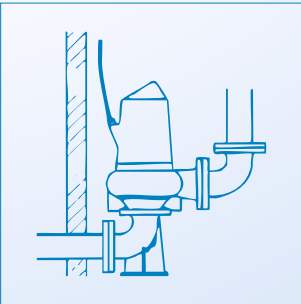
## DIFFERENT INSTALLATION TYPE



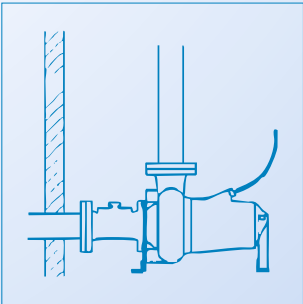
Stationary wet (N)



Mobile wet (M)



Vertical dry (TV)



Horizontal dry (TH)



# Superior clog resistance for maximum reliability

## HOW CAN YOU BE SURE A WASTEWATER PUMP WON'T CLOG?

Our ASW series has been rigorously tested in accordance with DWA-A120-2, the recognized German standard for evaluating wastewater pump performance.

The test simulates real-world conditions by introducing varying quantities of wipes (25, 50, and 100 pieces per m<sup>3</sup>) over a one-hour period, during which the pump's efficiency and operational reliability are closely monitored.

According to the standard, a pump with a DLTF (Degree

of Long-Term Functional Performance) value above 0.7 is considered reliably clog resistant. Our ASW pumps—equipped with both non-clogging (N) and vortex (V) hydraulics—consistently achieve scores above 0.9, demonstrating exceptionally low clogging tendency and high operational reliability.

With their robust design and proven performance, ASW pumps deliver dependable operation even in the most demanding wastewater environments.



# Greater efficiency for a competitive edge

## RESEARCH AND DEVELOPMENT

Continuously increasing demands by customers in our operating industries emphasize the significance of R&D in the constant optimization of products and services. Today, efficiency, flexibility, and reliability over an extended lifetime are the major challenges of the market. Our commitment to research and development forms the basis for our advances in hydraulic machine manufacturing. With Pump Technology Center (PTC) ASTROE, center for hydraulic engineering and laboratory, we have an internationally renowned institute for hydraulic development work at our disposal. We are developing and testing our pumps at different locations worldwide. Our test stands are among the most accurate in the world. By networking these research and development centers, we provide a continuous transfer of know-how within the ANDRITZ GROUP for the benefit of our customers. The main tools for R&D are numerical

simulation methods as well as experimental measurements in the laboratory and on site. State-of-the-art equipment, highly precise measuring instruments as well as the latest simulation technologies, and powerful software form the basis of the high technical quality of the pumps and turbines from ANDRITZ.



## AN OVERVIEW OF OUR SERVICES

- Supply of original spare parts
- Deployment of trained personnel
- Installation and start-up
- Inspection
- Repairs, overhauls, maintenance
- Machine assessment by an expert for early fault detection
- Consulting and modernization
- Performance and vibration measurement
- Fault and damage analyses
- Feasibility studies
- Energy consulting for pumps and systems
- Preparation of maintenance schedules
- Service and maintenance agreements
- Automation and Electrical Power Systems
- Electronic equipment
- Training



## INNOVATION SINCE 1852

The internationally renowned ANDRITZ GROUP has been building pumps for more than 170 years. We offer innovative and targeted solutions with pumps and complete pumping stations. Our longstanding experience in hydraulic machine manufacturing and complete process know-how forms the basis of the high standard of ANDRITZ pump engineering. Our quality and high-efficiency products as well as our understanding of customer requirements have made us a preferred partner for pumping solutions worldwide. ANDRITZ offers everything from a single source – from development work, model tests, engineering design, manufacture and project management, to after-sales service and training. We also perform complete start-up on site and guarantee our customers the best support. Our declared goal is your complete satisfaction. See for yourself!

### EUROPE

ANDRITZ AG  
Stattegger Strasse 18  
8045 Graz, Austria  
p: +43 316 6902-2509  
f: +43 316 6902-413  
pumps@andritz.com

ANDRITZ Pumps Germany GmbH  
Marie-Curie-Straße 19  
73529 Schwäbisch Gmünd,  
Germany  
p: +49 7171 609-0  
f: +49 7171 609-287  
ritz@andritz.com

ANDRITZ Hydro SRL  
Polígono Industrial La Garza 2  
Carretera de Algete M-106, Km. 2  
28110 Algete  
Spain  
p: +34 91 6636 409  
f: +34 91 425 1001  
bombas.es@andritz.com

### ASIA

ANDRITZ (CHINA) LTD.  
No.83 B Zone, Leping Central  
Technology & Industry Park,  
Sanshui District, Foshan 528137,  
Guangdong, P.R.China  
p: +86 0757 6663-3102  
atc\_pumps@andritz.com

ANDRITZ Technologies Pvt. Ltd.  
S.No. 389, 400/2A & 400/2C, Padur  
Road, Kuthambakkam Village,  
Poonamallee Talluk, Thiruvallur  
District –600124, Chennai, India  
p: +91 44 4399-1111  
pump.in@andritz.com

ANDRITZ FZCO  
Building 6WA – Office No. 329  
54522 Dubai,  
United Arab Emirates  
p: +971 506 069 884  
dubai@andritz.com

### SOUTH AMERICA

ANDRITZ HYDRO  
Alameda Tocantins 350,  
120 andar 06455-020,  
Barueri, SP – Brasil  
p: +55 11 4133-0000  
f: +55 11 4133-0037  
bombas.br@andritz.com

### NORTH AMERICA

ANDRITZ Inc. 5405 Windward  
Parkway, Suite 100W Alpharetta  
Georgia 30004-3894m  
United States of America  
p: +1 770 640-2500  
f: +1 770 640-9454  
pumps.us@andritz.com

**ANDRITZ.COM/PUMPS**



All data, information, statements, photographs and graphic illustrations in this brochure are without any obligation and raise no liabilities to or form part of any sales contracts of ANDRITZ AG or any affiliates for equipment and/or systems referred to herein. © ANDRITZ Group 2025. All rights reserved. No part of this copyrighted work may be reproduced, modified or distributed in any form or by any means, or stored in any database or retrieval system, without the prior written permission of ANDRITZ AG or its affiliates. Any such unauthorized use for any purpose is a violation of the relevant copyright laws. ANDRITZ AG, Stattegger Strasse 18, 8045 Graz, Austria.

