



9531.06

853.87

ANDRITZ PIMS

Drive smarter, faster
data-driven decisions across
your pulp and paper mill

ANDRITZ

Converting raw data into useful insights

Pulp and paper mills operate in an increasingly complex environment, facing rising energy costs, volatile raw material prices and growing demands for efficiency and sustainability. In this high-pressure setting, fast decision-making and consistent performance are critical to staying competitive. Digitalization is no longer optional; it is a strategic imperative.

ANDRITZ Pulp and Paper is leading this transformation with a portfolio of advanced digital solutions that combine deep process expertise with cutting-edge technologies. At the core of this offer is ANDRITZ PIMS, our Plant Information Management System (PIMS) solution, powered by Metris Insights, transforming raw process data into actionable intelligence, enabling pulp and paper mills to stabilize operations, reduce variability, and optimize performance.

With real-time monitoring, predictive analytics and embedded AI/ML capabilities, it provides a holistic view of your operations, helping you make smarter decisions, improve resource efficiency, and prepare for autonomous operations.

ANDRITZ PIMS 5

MEASURABLE VALUES TO CUSTOMERS 6

EXPLORE ALL APPLICATIONS 7



What drives us forward?

ANDRITZ's aim is to make the fully autonomous mill a reality because of the measurable outcomes it brings to our customers' industrial plants. These outcomes impact four strategic pillars that directly influence operational performance: process, asset, human, and sustainability.



PROCESS



ASSET



HUMAN



SUSTAINABILITY

These pillars make our value tangible, connecting solutions to what truly matters to our clients: real, measurable results.

How can we make a difference in your mill?

This is the question that guides the development of every ANDRITZ automation and digitalization solution for the pulp and paper industries. More than delivering technology, our commitment is to generate real and measurable impact on our customers' operations. We believe that true value lies in results you can measure. That's why we focus on outcomes that are tangible, trackable, and aligned with our customers' goals. In practice, this means connecting solutions that can act on:



PRODUCTION INCREASE



MILL AVAILABILITY INCREASE



COST REDUCTION



PRODUCTIVITY INCREASE



REDUCTION IN WATER USAGE



QUALITY LOSSES REDUCTION



MAINTENANCE COST REDUCTION



INCREASE ENERGY EFFICIENCY



OPERATOR ACTIONS REDUCTION



REDUCTION IN EMISSIONS



SAFETY IMPROVEMENT

These are real gains, connected to each pillar, transforming technology into tangible results. By connecting solutions designed to solve specific industry challenges, we deliver new ways to make a difference and contribute to results. This is how we transform technology into real value.

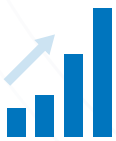
ANDRITZ PIMS

Drive smarter, faster data-driven decisions across your mill

Modern plants generate vast amounts of process data every second, but real value comes from turning that data into clear, actionable insight. ANDRITZ PIMS, powered by Metris Insights, does exactly that. As a core data analytics component of the Metris all-in-one platform, it brings together a comprehensive suite of applications to collect, structure, analyze, and visualize information from across the entire plant.

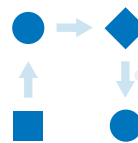
The result is a complete Plant Information Management System (PIMS) that helps teams identify deviations, benchmark performance, detect inefficiencies, and drive process optimization at scale. ANDRITZ PIMS offers a holistic view of your pulp and paper operations, turning data into information, information into insights, and insights into measurable value.

Key benefits:



FORGED ON THE FIELD

More than 17 years in many plants in different countries



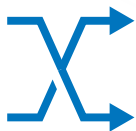
APPLICATIONS PORTFOLIO CONTINUOUSLY INCREMENTED

Getting value from mill data for operation, maintenance, process control, production cost, environmental



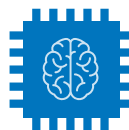
YOUR ALLY ON PROCESS OPTIMIZATION

Main pillar of process optimization, the tool we rely on to achieve savings guarantees



INTEGRATED AND COMPREHENSIVE PLATFORM

All mill data into a single platform allowing multiple dimensions analysis



AI READY

Machine learning tools are incorporated



KPIs TO TRANSLATE DATA INTO INFO

Wherever the KPI concept can be used we have an application to make it



Measurable values to customers

Digitalization is not just about technology, it's about measurable results. ANDRITZ PIMS delivers tangible improvements across key performance areas, helping mills operate more efficiently, reliably, and profitably.

What can you achieve:



**UP TO 0.5%
PRODUCTION INCREASE**

Stabilize processes by monitoring control loops and valves, reducing variability in key parameters like flow and consistency. Faster, smoother startups after shutdowns mean less downtime and more output



**UP TO 1%
COST REDUCTION**

Define KPIs, predict cost deviations, and identify key contributors to keep expenses under control and within budget



**UP TO 20%
QUALITY LOSSES REDUCTION**

Use Statistical Process Control and advanced diagnostics to minimize variability, anticipate quality issues, and validate instruments with soft sensors



**UP TO 1%
MILL AVAILABILITY INCREASE**

Detect potential failures early, manage shutdowns efficiently, and allocate resources to the highest-risk areas to maximize uptime



**UP TO 2%
MAINTENANCE COST REDUCTION**

Optimize shutdown planning, schedule repairs proactively, and reduce overtime through better lifecycle management of assets



**UP TO 5%
PRODUCTIVITY INCREASE**

Tune control loops for near 100% automatic operation and accelerate diagnostics with integrated tools



**UP TO 1% REDUCTION
IN EMISSIONS**

Monitor consumption, anticipate trends, and ensure compliance with specifications through real-time alerts and predictive analytics



**UP TO 1% REDUCTION
IN WATER USAGE**



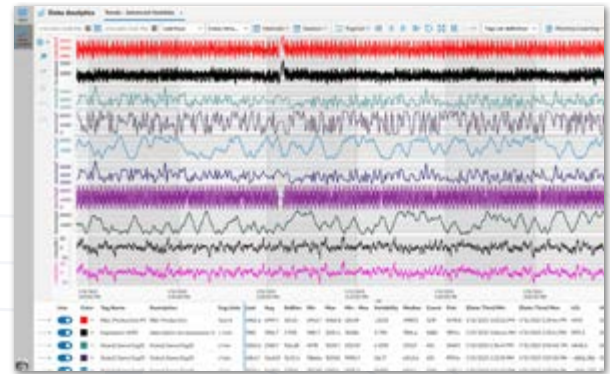
**UP TO 1% INCREASE
ENERGY EFFICIENCY**

Explore all applications

Plant Information Management System (PIMS)

DATA ANALYTICS

The Data Analytics application provides tools that can be used for analyzing data from a set of variables. Countless are visualization capabilities that transform data into information relevant to support the analysis and decision-making actions.



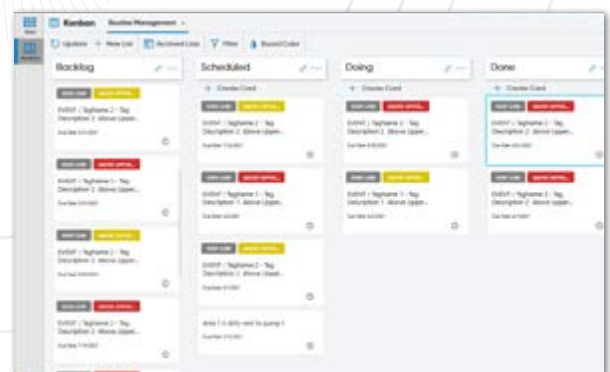
DISPLAY STUDIO

Through the Display Studio it is possible to create, to integrate and to manage process overviews and diagrams by arranging them by a quick access menu and adding and integrating existing features in Data Analytics application suite.



KANBAN

Kanban application is a visual system for managing work as it moves through a process. Kanban visualizes both the process (the workflow) and the actual work passing through that process. Kanban application main features include integration with other Metris applications to provide a full solution regarding tasks management.


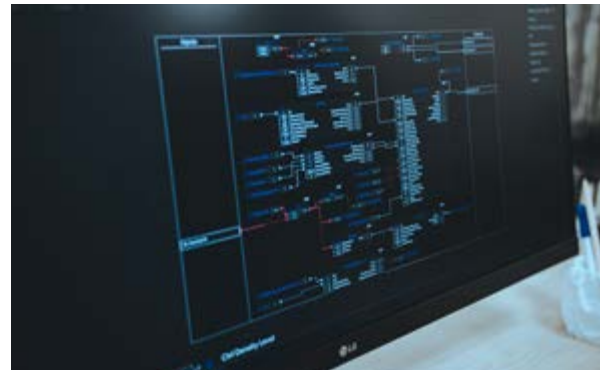


Explore all applications

Plant Information Management System (PIMS)

STATISTICAL PROCESS CONTROL (SPC)

Statistical Process Control delivers methodologies to support eliminating meaningless source of variations and guide users to be dedicated in valuable data information.



REPORTS

The report's application is a tool for visualizing data collected to Metris All-in-one Platform in a meaningful way that can be distributed among decision makers in the mill.

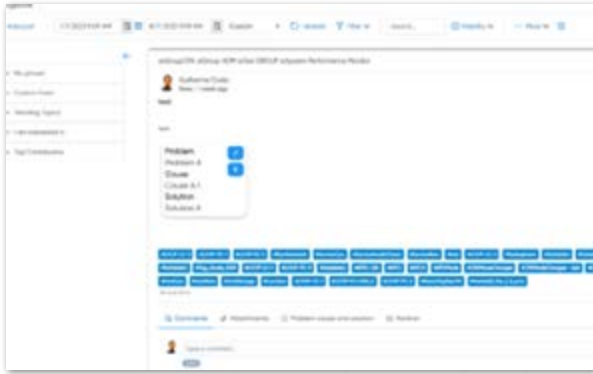
CARBON FOOTPRINT

Calculate and report product carbon footprint with precision, aligning with GHG Protocol scopes (Scope 1, 2, and 3) and production-specific areas. Designed for flexibility, the solution can be implemented in targeted process areas or scaled across the entire mill.



Explore all applications

Plant Information Management System (PIMS)



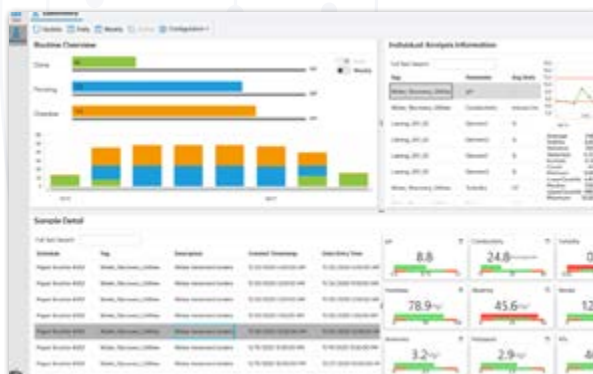
LOGBOOK

Logbook application is the communication core of the Metris all-in-one-Platform.

This application enables you to share knowledge, collaborate, solve common problems, exchange information inside groups and interact with other users.

ENERGY MANAGEMENT

Monitor, forecast and optimize plant's energy consumption (electricity, heat, etc.). It automatically identifies disturbances and determines shutdown loads according to the current consumption and priority.



LABORATORY (LIMS)

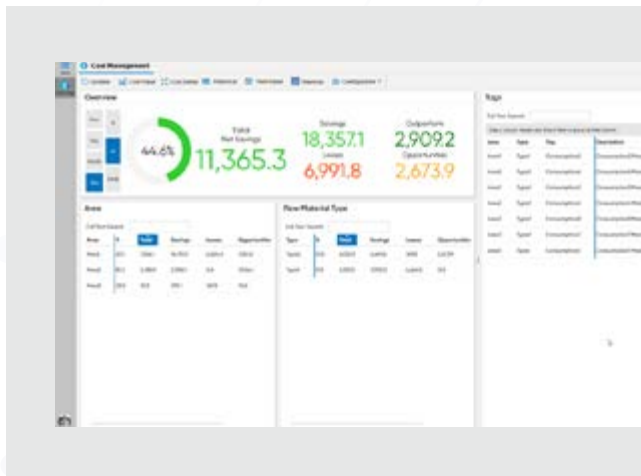
The Laboratory application was developed to simplify the routine of entry and use of process samples data in Metris All-in-one Platform. Through an automatic data entry scheduling system, this application makes the routine much more practical and safer.

Explore all applications

Plant Information Management System (PIMS)

OVERALL EQUIPMENT EFFECTIVENESS (OEE)

The OEE application goes far beyond effectiveness equations. By tracking and processing data inputs, control, costs, and environmental aspects, a powerful diagnose is reasonably delivered and it points out true production shutdowns and monitors process equipment in order to be operated efficiently and effectively.



COST MANAGEMENT

Cost Management transform process data into behaviors to point out where are the opportunities in middle of vast mill scenarios. Clarifying indicators enable in-depth diagnoses to dynamically investigate raw material losses and savings, grouped by various process areas and dozens of other categories.

PRODUCT TRACKER

The Product Tracker dynamically compensates for delay times, extending existing applications with new analysis options and adding new visualization tools to the platform. The delay time compensation can be applied to historic process data, but can also be calculated online to alarm the operators during daily operations.

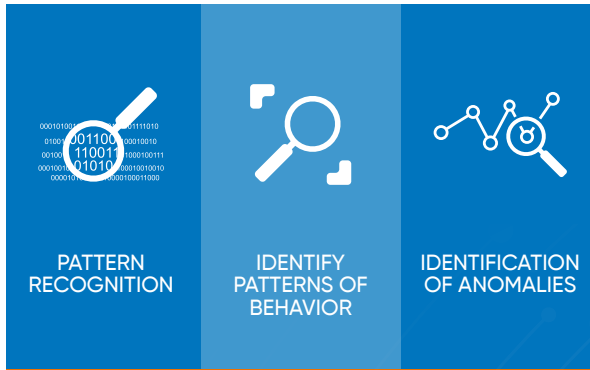
The Product Tracker application displays a table of production data with columns for Order, Peak, To, and OEE. The table lists various production orders and their corresponding OEE values.

Order	Peak	To	OEE %
1001	10/1/2024 10:00	10/1/2024 10:30	10%
1002	10/1/2024 10:00	10/1/2024 10:30	10%
1003	10/1/2024 10:00	10/1/2024 10:30	10%
1004	10/1/2024 10:00	10/1/2024 10:30	10%
1005	10/1/2024 10:00	10/1/2024 10:30	10%
1006	10/1/2024 10:00	10/1/2024 10:30	10%
1007	10/1/2024 10:00	10/1/2024 10:30	10%
1008	10/1/2024 10:00	10/1/2024 10:30	10%
1009	10/1/2024 10:00	10/1/2024 10:30	10%
1010	10/1/2024 10:00	10/1/2024 10:30	10%



Explore all applications

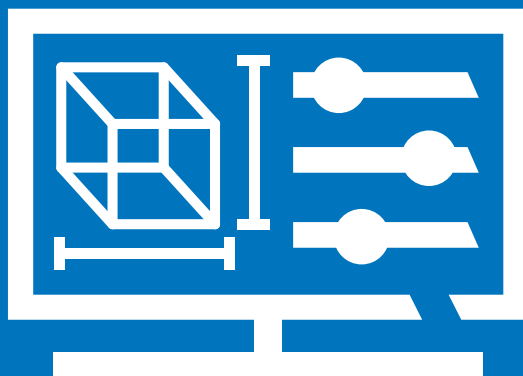
Plant Information Management System (PIMS)



MACHINE LEARNING STUDIO

Advanced Data Analytics provides a set of tools covering everything from simple calculations to advanced artificial intelligence algorithms. The tools are integrated in Metris all-in-one Platform, making it an end-to-end solution. For example, all the data, machine learning toolbox and control system library needed to construct a process optimization application are available inside the platform. In addition, the platform offers a range of tools covering different levels of knowledge, satisfying users with less data science skills and users searching for more advanced tools.

**Turning data into
information, information
into insights, and insights
into value.**



Your ally on process optimization: ANDRITZ PIMS is a core enabler of plant-wide optimization, and the solution customers trust to support savings targets. With real-time monitoring and clear operational insights, it helps teams fine-tune performance and make informed decisions. Its flexible architecture supports everything from small installations to extra-large databases, ensuring a reliable fit for any mill environment.



CONTACT US FOR MORE INFORMATION

Advancing autonomous operations is our vision and is becoming an integral part of industrial processes. ANDRITZ is at the forefront of this transformation, leveraging digital innovations along with deep operational and technical expertise to improve process efficiency, quality management, and production reliability and availability.

We focus on developing autonomous pulp mills and process optimization, to support efficient and sustainable operations by combining automation, electrification, intelligent instrumentation, and digitalization to create measurable value throughout the full life cycle and the entire value stream.

AFRICA

ANDRITZ DELKOR

p: +27 11 012 730\

CENTRAL EUROPE, EAST EUROPE AND MIDDLE EAST

ANDRITZ AG

p: +43 316 6902 0

CHINA

ANDRITZ (China) Ltd.

p: +86 757 8258 6708

m: +86 186 8003 6919

INDIA/SOUTHEAST ASIA

ANDRITZ Technologies Pvt. Ltd

Bangalore

p: +91 80 4666 9600

LATIN AMERICA

ANDRITZ Chile

p: +56 2 462 4600

ANDRITZ Brasil Ltda.

p: +55 (41) 2103 7601

NORTH AMERICA

ANDRITZ Inc.

p: +1 770 640 2500

NORTHERN EUROPE AND BALTICS

ANDRITZ Oy

p: +358 20 450 5555

SCANDINAVIA

ANDRITZ AB

p: +46 54 771 45 00

SOUTH-WEST EUROPE

ANDRITZ SAS

p: +33 (2) 54 61 33 33

ANDRITZ.COM

JOIN US ON SOCIAL MEDIA



ANDRITZ

All data, information, statements, photographs and graphic illustrations in this brochure are without any obligation and raise no liabilities to or form part of any sales contracts of ANDRITZ AG or any affiliates for equipment and/or systems referred to herein. © ANDRITZ Group 2026. All rights reserved. No part of this copyrighted work may be reproduced, modified or distributed in any form or by any means, or stored in any database or retrieval system, without the prior written permission of ANDRITZ AG or its affiliates. Any such unauthorized use for any purpose is a violation of the relevant copyright laws. ANDRITZ AG, Stattegger Strasse 18, 8045 Graz, Austria. ANDRITZ PIMS brochure, 01/2026, EN.